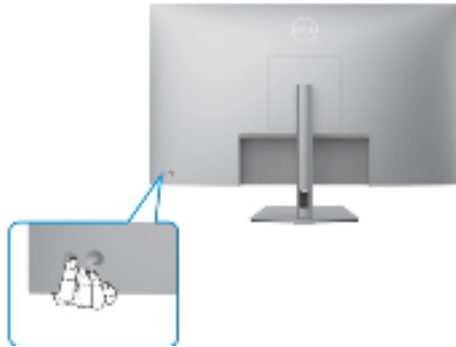


1. Disassembly Procedures:

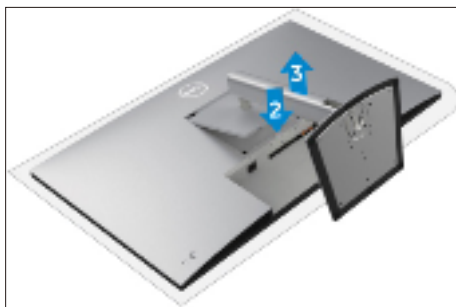
S1 Turn off power..



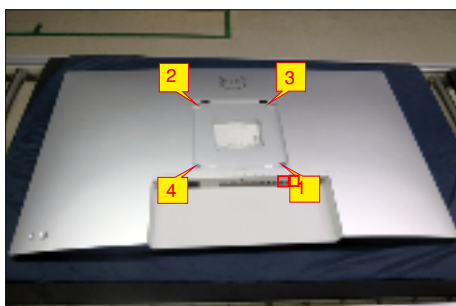
S2 Unplug external cables(power cable and video cable) from the monitor.



S3 Remove stand from the product.(Press the stand release button, lift the stand up and away from the monitor)

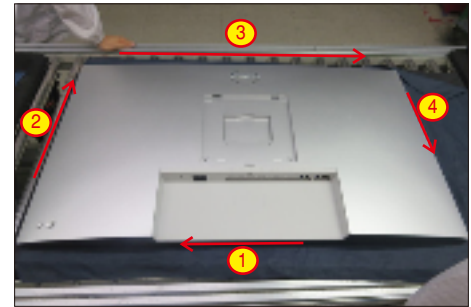


S4 Use a Philips-head screwdriver to remove 4pcs screws for unlocking mechanisms. Remove DP caps. (No.1~4 screw size=M4x11; Torque=11±1kgfxcmm)



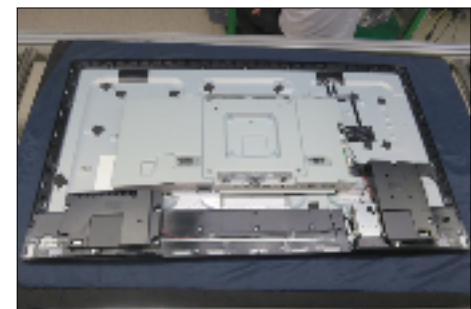
S5

Tear off screen protector, then wedge your fingers between rear cover and the middle bezel on the corners of the top side of the monitor to release the rear cover, then use one hand to press the middle bezel, the other hand to pull up the rear cover in order of arrow preference for unlocking the rear cover.



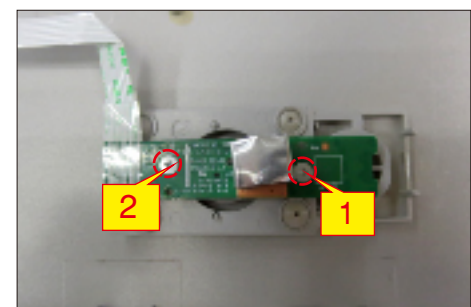
S6

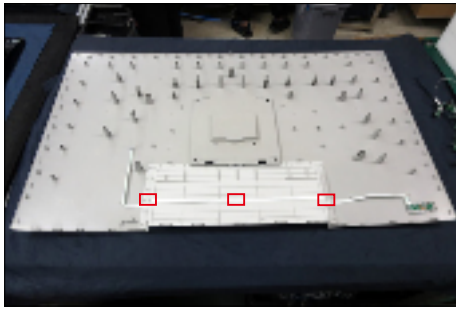
Lift the rear cover up carefully. Disconnect the joystick key cable from the connector of the interface board, and then remove the rear cover and put it aside for later disassembling.



S7

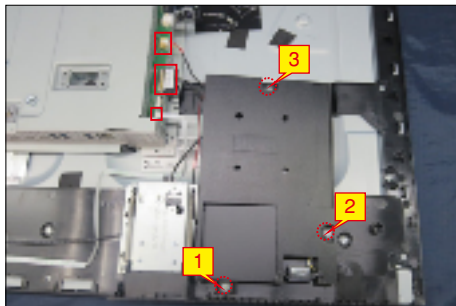
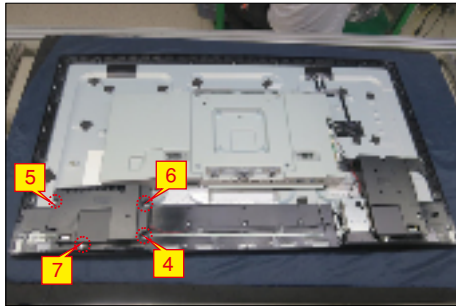
Use a Philips-head screwdriver to remove 2pcs screw for unlocking the key board, then tear off the tapes and release the key board. (No.1~2 screw size=M2x3.3, Torque=0.8~1kgfxcmm)





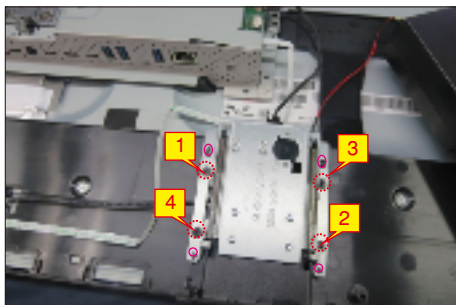
S8

Use a Philips-head screwdriver to remove 7pcs screws for unlocking the two speakers. Release the left speaker cables from the probers of the middle frame, and then disconnect the speaker cable, LED cable and USB cable away from the connector.
(No.1~7 screw size=M3x8, Torque=4±1kgfxcn)



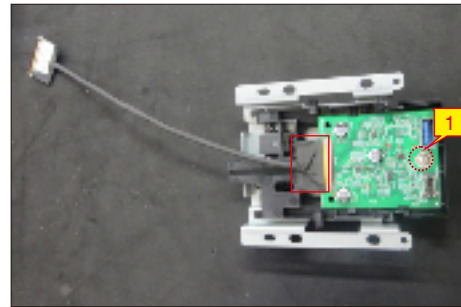
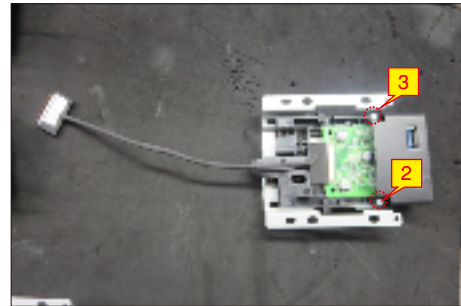
S9

Use a Philips-head screwdriver to remove 4pcs screw for unlocking the USB unit with the middle frame, and then release the USB unit from the hooks of middle frame.
(No.1~4 screw size=M3x4, Torque=3.5±0.5kgfxcn)



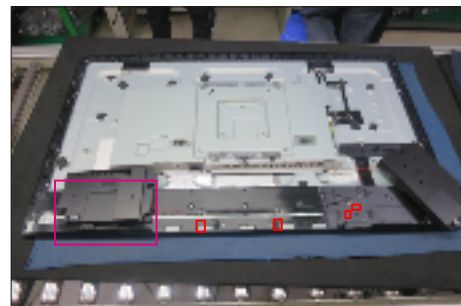
S10

Use a Philips-head screwdriver to remove 2pcs screws for unlocking the USB cover, remove the USB cover, then use a Philips-head screwdriver to remove 1pcs screw for locking the USB board with the USB bracket. Disconnect the USB connective cable.
(No.1 screw size=M3x3, Torque=3.5±0.5kgfxcn;
No.2~3 screw size=M3x4, Torque=1±0.2kgfxcn)



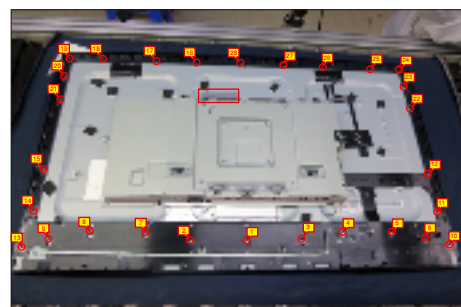
S11

Release the speakers' cable to from the hooks of the middle frame, then remove the speakers.



S12

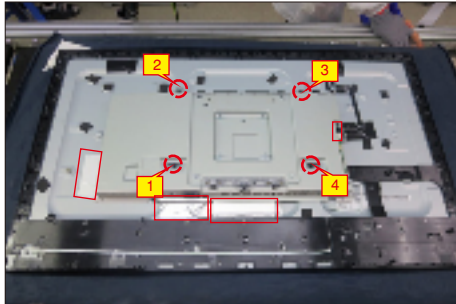
Tear off 1pcs aluminum foil to release the bracket chassis. Use a Philips-head screwdriver to remove 28pcs screws for unlocking the middle frame with the panel module.
(No.1~28 Screw size= M3x0.5x4, Torque=5±0.5kgfxcn)



S13

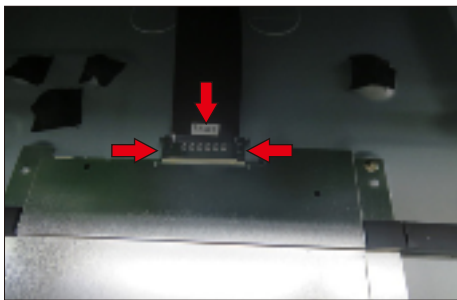
Tear off 3pcs aluminum foil, then use a Philips-head screwdriver to remove 4pcs screws for locking the bracket chassis module with the panel.

(No.1~4 Screw size= M6x12, Torque=9±0.5kgfxcn)



S14

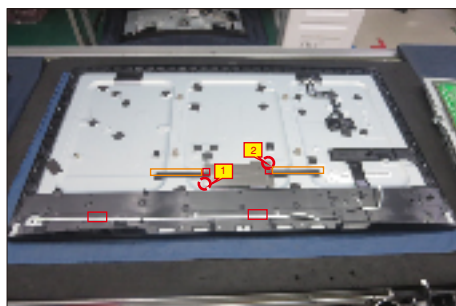
Lift up the bracket chassis, and disconnect the LVDS cable from the connector of the T-CON board of panel module, then put the bracket chassis on a protective cushion for later disassembling.



S15

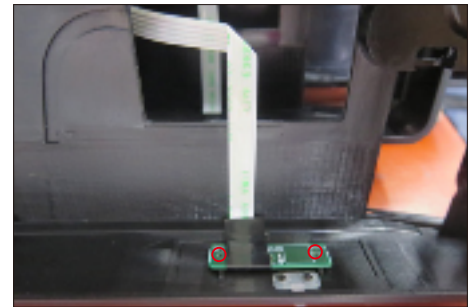
Tear off 4pcs rubbers, then use a Philips-head screwdriver to remove 2pcs screws for unlocking the small bracket with T-Con board, then remove the small bracket, then release the LED key cable by tearing off tapes on the back of the cable.

(No.1~2 Screw size= M3x0.5x4, Torque=3~5kgfxcn)



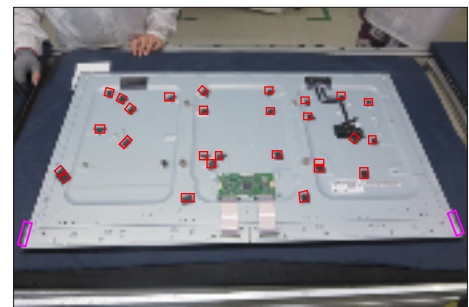
S16

Lift up the middle frame and put it into a fixture, tear off the maylar tape for releasing the LED key board away from the middle frame.



S17

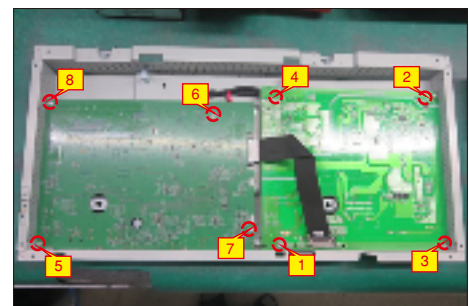
Remove 2pcs shading tape on the left and right side of the panel corner, then remove 27pcs acetate tapes on the specific positions of the back of panel.



S18

Use a Philips-head screwdriver to remove 9pcs screws for unlocking power board and interface board with the bracket.

(No.1 screw size=M4x8, Torque=6±0.5kgfxcn;
No.2~8 screw size=M3x7.5, Torque=6±0.5kgfxcn)



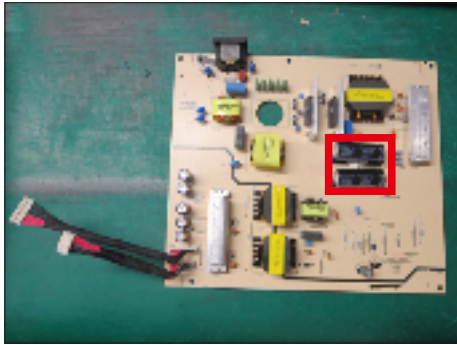
S19

Remove the circuit boards from the bracket chassis module carefully, and then disconnect all of the cables.



S20

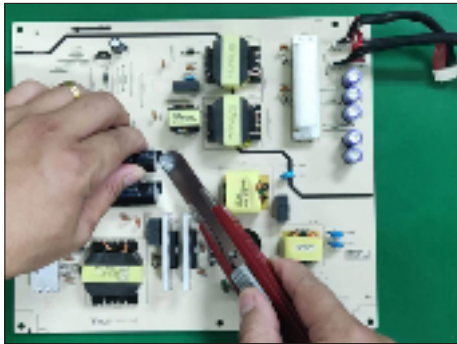
Remove electrolyte capacitors (red mark) from printed circuit boards.



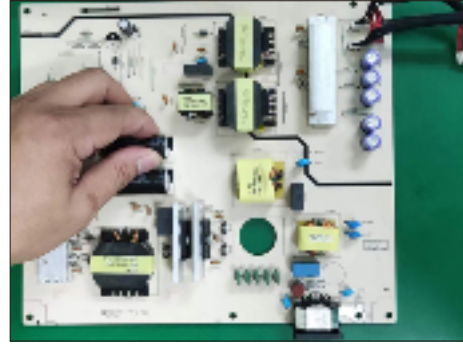
S20-4 Take out bulk cap. pin solder with soldering iron and absorber.



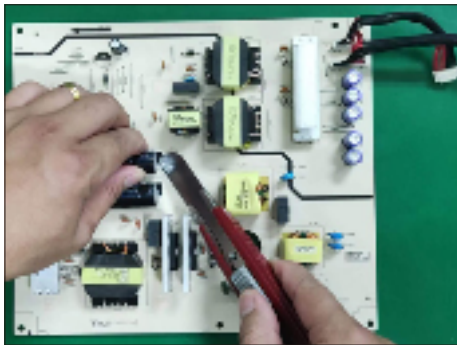
S20-1 Cut the glue between bulk cap. and PCB with a knife.



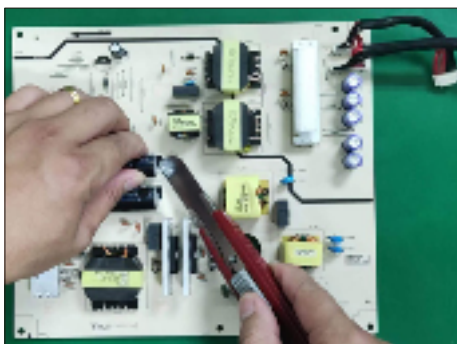
S20-5 Lift the bulk cap. up and away from the PCB.



S20-2 Ensure cutting path within the glue, don't touch bulk cap. or PCB.



S20-3 Cut into the bottom of bulk cap. and pullit up carefully.



2. Product material information

The following substances, preparations, or components should be disposed of or recovered separately from other WEEE in compliance with Article 4 of EU Council Directive 75/442/EEC.

Capacitors / condensers (containing PCB/PCT)	No used
Mercury containing components	No used
Batteries	No used
Printed circuit boards (with a surface greater than 10 square cm)	Product has printed circuit boards (with a surface greater than 10 square cm)
Component contain toner, ink and liquids	No used
Plastic containing BFR	No used
Component and waste contain asbestos	No used
CRT	No used
Component contain CFC, HCFC, HFC and HC	No used
Gas discharge lamps	No used
LCD display > 100 cm ²	Product has an LCD greater than 100 cm ²
External electric cable	Product has external cables
Component contain refractory ceramic fibers	No used
Component contain radio-active substances	No used
Electrolyte capacitors (height > 25mm, diameter > 25mm)	Product has electrolyte capacitors (height > 25mm, diameter > 25mm)

3. Tools Required

List the type and size of the tools that would typically can be used to disassemble the product to a point where components and materials requiring selective treatment can be removed.

Tool Description:

- Screwdriver (Phillip head) #1
- Screwdriver (Phillip head) #2
- Penknife
- Soldering iron and absorber