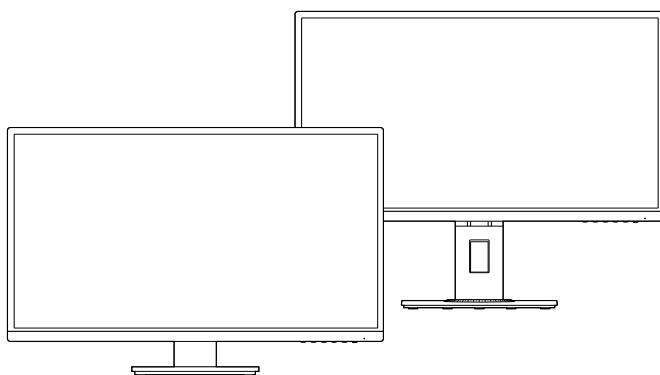




**VA279 Series**

**LCD Monitor**

*User Guide*



**HDMI™**  
HIGH DEFINITION MULTIMEDIA INTERFACE

**Copyright © 2018 ASUSTeK COMPUTER INC. All Rights Reserved.**

No part of this manual, including the products and software described in it, may be reproduced, transmitted, transcribed, stored in a retrieval system, or translated into any language in any form or by any means, except documentation kept by the purchaser for backup purposes, without the express written permission of ASUSTeK COMPUTER INC. ("ASUS").

Product warranty or service will not be extended if: (1) the product is repaired, modified or altered, unless such repair, modification or alteration is authorized in writing by ASUS; or (2) the serial number of the product is defaced or missing.

ASUS PROVIDES THIS MANUAL "AS IS" WITHOUT WARRANTY OF ANY KIND, EITHER EXPRESS OR IMPLIED, INCLUDING BUT NOT LIMITED TO THE IMPLIED WARRANTIES OR CONDITIONS OF MERCHANTABILITY OR FITNESS FOR A PARTICULAR PURPOSE. IN NO EVENT SHALL ASUS, ITS DIRECTORS, OFFICERS, EMPLOYEES OR AGENTS BE LIABLE FOR ANY INDIRECT, SPECIAL, INCIDENTAL, OR CONSEQUENTIAL DAMAGES (INCLUDING DAMAGES FOR LOSS OF PROFITS, LOSS OF BUSINESS, LOSS OF USE OR DATA, INTERRUPTION OF BUSINESS AND THE LIKE), EVEN IF ASUS HAS BEEN ADVISED OF THE POSSIBILITY OF SUCH DAMAGES ARISING FROM ANY DEFECT OR ERROR IN THIS MANUAL OR PRODUCT.

SPECIFICATIONS AND INFORMATION CONTAINED IN THIS MANUAL ARE FURNISHED FOR INFORMATIONAL USE ONLY, AND ARE SUBJECT TO CHANGE AT ANY TIME WITHOUT NOTICE, AND SHOULD NOT BE CONSTRUED AS A COMMITMENT BY ASUS. ASUS ASSUMES NO RESPONSIBILITY OR LIABILITY FOR ANY ERRORS OR INACCURACIES THAT MAY APPEAR IN THIS MANUAL, INCLUDING THE PRODUCTS AND SOFTWARE DESCRIBED IN IT.

Products and corporate names appearing in this manual may or may not be registered trademarks or copyrights of their respective companies, and are used only for identification or explanation and to the owners' benefit, without intent to infringe.

# Contents

|                                                        |      |
|--------------------------------------------------------|------|
| Contents .....                                         | iii  |
| Notices .....                                          | iv   |
| Safety information .....                               | v    |
| Care & Cleaning .....                                  | vi   |
| Takeback Services .....                                | vii  |
| <b>Chapter 1: Product introduction</b>                 |      |
| 1.1 Welcome! .....                                     | 1-1  |
| 1.2 Package contents .....                             | 1-1  |
| 1.3 Monitor introduction .....                         | 1-2  |
| 1.3.1 Front view .....                                 | 1-2  |
| 1.3.2 Back view .....                                  | 1-3  |
| <b>Chapter 2: Setup</b>                                |      |
| 2.1 Assembling the monitor arm/base .....              | 2-1  |
| 2.2 Detaching the arm/base (for VESA wall mount) ..... | 2-2  |
| 2.3 Adjusting the monitor .....                        | 2-3  |
| 2.4 Connecting the cables .....                        | 2-4  |
| 2.5 Turning on the monitor .....                       | 2-5  |
| <b>Chapter 3: General instructions</b>                 |      |
| 3.1 OSD (On-Screen Display) menu .....                 | 3-1  |
| 3.1.1 How to reconfigure .....                         | 3-1  |
| 3.1.2 OSD function introduction .....                  | 3-2  |
| 3.2 Specifications summary .....                       | 3-9  |
| 3.3 Outline dimensions .....                           | 3-11 |
| 3.4 Troubleshooting (FAQ) .....                        | 3-13 |
| 3.5 Supported operating modes .....                    | 3-14 |

# Notices

## Federal Communications Commission Statement

This device complies with Part 15 of the FCC Rules. Operation is subject to the following two conditions:

- This device may not cause harmful interference, and
- This device must accept any interference received including interference that may cause undesired operation.

This equipment has been tested and found to comply with the limits for a Class B digital device, pursuant to Part 15 of the FCC Rules. These limits are designed to provide reasonable protection against harmful interference in a residential installation. This equipment generates, uses and can radiate radio frequency energy and, if not installed and used in accordance with the instructions, may cause harmful interference to radio communications. However, there is no guarantee that interference will not occur in a particular installation. If this equipment does cause harmful interference to radio or television reception, which can be determined by turning the equipment off and on, the user is encouraged to try to correct the interference by one or more of the following measures:

- Reorient or relocate the receiving antenna.
- Increase the separation between the equipment and receiver.
- Connect the equipment into an outlet on a circuit different from that to which the receiver is connected.
- Consult the dealer or an experienced radio/TV technician for help.



The use of shielded cables for connection of the monitor to the graphics card is required to assure compliance with FCC regulations. Changes or modifications to this unit not expressly approved by the party responsible for compliance could void the user's authority to operate this equipment.

## Canadian Department of Communications Statement

This digital apparatus does not exceed the Class B limits for radio noise emissions from digital apparatus set out in the Radio Interference Regulations of the Canadian Department of Communications.

This class B digital apparatus complies with Canadian ICES-003.

This Class B digital apparatus meets all requirements of the Canadian Interference - Causing Equipment Regulations.

Cet appareil numérique de la classe B respecte toutes les exigences du Règlement sur le matériel brouiller du Canada.



## Safety information

- Before setting up the monitor, carefully read all the documentation that came with the package.
- To prevent fire or shock hazard, never expose the monitor to rain or moisture.
- Never try to open the monitor cabinet. The dangerous high voltages inside the monitor may result in serious physical injury.
- If the power supply is broken, do not try to fix it by yourself. Contact a qualified service technician or your retailer.
- Before using the product, make sure all cables are correctly connected and the power cables are not damaged. If you detect any damage, contact your dealer immediately.
- Slots and openings on the back or top of the cabinet are provided for ventilation. Do not block these slots. Never place this product near or over a radiator or heat source unless proper ventilation is provided.
- The monitor should be operated only from the type of power source indicated on the label. If you are not sure of the type of power supply to your home, consult your dealer or local power company.
- Use the appropriate power plug which complies with your local power standard.
- Do not overload power strips and extension cords. Overloading can result in fire or electric shock.
- Avoid dust, humidity, and temperature extremes. Do not place the monitor in any area where it may become wet. Place the monitor on a stable surface.
- Unplug the unit during a lightning storm or if it will not be used for a long period of time. This will protect the monitor from damage due to power surges.
- Never push objects or spill liquid of any kind into the slots on the monitor cabinet.
- To ensure satisfactory operation, use the monitor only with UL listed computers which have appropriate configured receptacles marked between 100-240V AC.
- If you encounter technical problems with the monitor, contact a qualified service technician or your retailer.
- Adjustment of the volume control as well as the equalizer to other settings than the center position may increase the ear-/headphones output voltage and therefore the sound pressure level.



This symbol of the crossed out wheeled bin indicates that the product (electrical, electronic equipment, and mercury-containing button cell battery) should not be placed in municipal waste. Please check local regulations for disposal of electronic products.

**AEEE yönetmeliğine uygundur**

## Care & Cleaning

- Before you lift or reposition your monitor, it is better to disconnect the cables and power cord. Follow the correct lifting techniques when positioning the monitor. When lifting or carrying the monitor, grasp the edges of the monitor. Do not lift the display by the stand or the cord.
- Cleaning. Turn your monitor off and unplug the power cord. Clean the monitor surface with a lint-free, non-abrasive cloth. Stubborn stains may be removed with a cloth dampened with mild cleaner.
- Avoid using a cleaner containing alcohol or acetone. Use a cleaner intended for use with the monitor. Never spray cleaner directly on the screen, as it may drip inside the monitor and cause an electric shock.

### The following symptoms are normal with the monitor:

- You may find slightly uneven brightness on the screen depending on the desktop pattern you use.
- When the same image is displayed for hours, an afterimage of the previous screen may remain after switching the image. The screen will recover slowly or you can turn off the Power Switch for hours.
- When the screen becomes black or flashes, or cannot work anymore, contact your dealer or service center to fix it. Do not repair the screen by yourself!

### Conventions used in this guide



**WARNING:** Information to prevent injury to yourself when trying to complete a task.



**CAUTION:** Information to prevent damage to the components when trying to complete a task.



**IMPORTANT:** Information that you **MUST** follow to complete a task.



**NOTE:** Tips and additional information to aid in completing a task.

## Where to find more information

Refer to the following sources for additional information and for product and software updates.

### 1. **ASUS websites**

The ASUS websites worldwide provide updated information on ASUS hardware and software products. Refer to <http://www.asus.com>

### 2. **Optional documentation**

Your product package may include optional documentation that may have been added by your dealer. These documents are not part of the standard package.

## Takeback Services

ASUS recycling and takeback programs come from our commitment to the highest standards for protecting our environment. We believe in providing solutions for our customers to be able to responsibly recycle our products, batteries and other components as well as the packaging materials.

Please go to <http://csr.asus.com/english/Takeback.htm> for detail recycling information in different region.





## 1.1 Welcome!

Thank you for purchasing the ASUS® LCD monitor!

The latest widescreen LCD monitor from ASUS provides a broader, brighter and crystal-clear display, plus a host of features that enhance your viewing experience.

With these features, you can enjoy the convenience and delightful visual experience that the monitor brings to you!

## 1.2 Package contents

Check your package for the following items:

- ✓ LCD monitor
- ✓ Monitor base
- ✓ Quick start guide
- ✓ Warranty card
- ✓ Power cord
- ✓ HDMI cable (optional)
- ✓ VGA cable (optional)



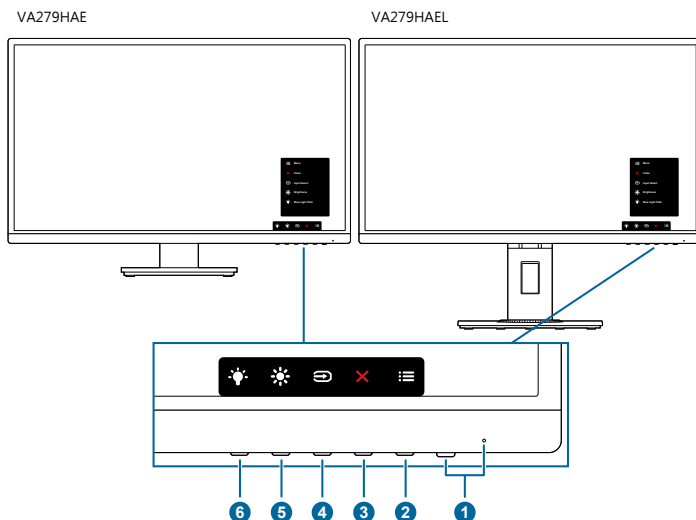
---

If any of the above items is damaged or missing, contact your retailer immediately.

---

## 1.3 Monitor introduction

### 1.3.1 Front view



1. Power button/power indicator

- Turns the monitor on/off.
- The color definition of the power indicator is as the below table.

| Status | Description  |
|--------|--------------|
| White  | On           |
| Amber  | Standby mode |
| Off    | Off          |

2. ☰ Menu button:



- Press this button to display the OSD menu when the OSD is off.
- Enters the OSD menu.
- Toggles the Key Lock function between on and off with a long press for 5 seconds.

3. ✕ Close button:

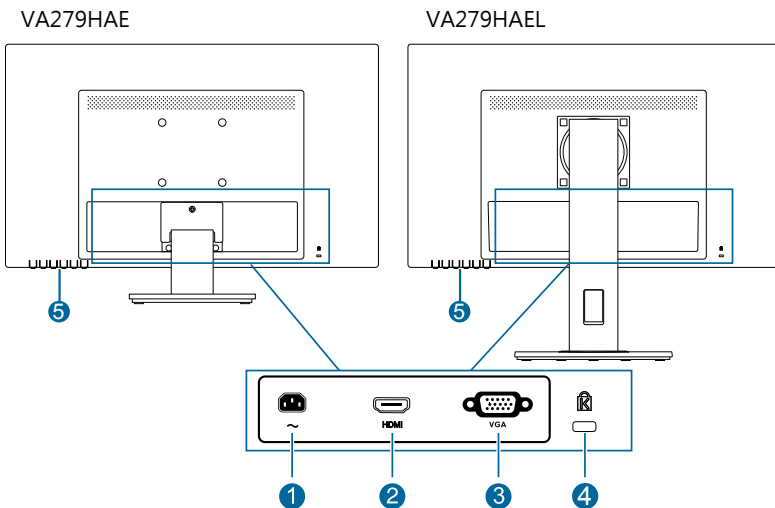
- Press this button to display the OSD menu when the OSD is off.
- Exits the OSD menu.

4. ↺ Input select button:

- Press this button to display the OSD menu when the OSD is off.
- Selects an available input source.

5.  **Shortcut 1**
- Press this button to display the OSD menu when the OSD is off.
  - Default: Brightness hotkey
  - To change the hotkey function, go to the Shortcut > Shortcut 1 menu.
6.  **Shortcut 2**
- Press this button to display the OSD menu when the OSD is off.
  - Default: Blue light filter hotkey
  - To change the hotkey function, go to the Shortcut > Shortcut 2 menu.

### 1.3.2 Back view



1. **AC-IN port.** This port connects the power cord.
2. **HDMI port.** This port is for connection with an HDMI compatible device.
3. **VGA port.** This 15-pin port is for PC VGA connection.
4. **Kensington lock slot.**
5. **Control buttons.**



## 2.1 Assembling the monitor arm/base

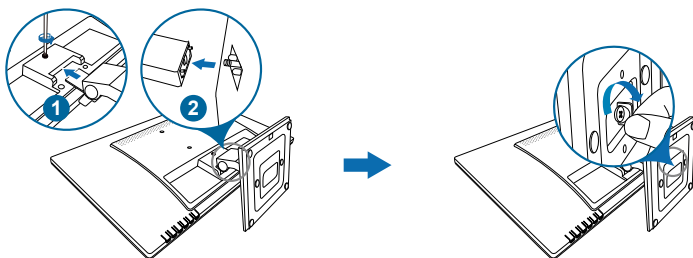
To assemble the monitor base:

1. Have the front of the monitor face down on a table.
2. Attach the base into the arm, making sure the tab on the arm fits into the groove on the base.
3. Fix the base to the arm by fastening the bundled screw.

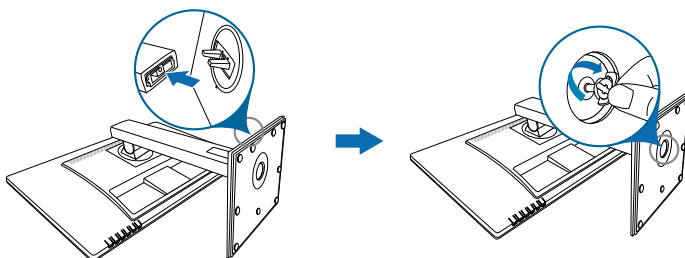


We recommend that you cover the table surface with soft cloth to prevent damage to the monitor.

VA279HAE



VA279HAEL



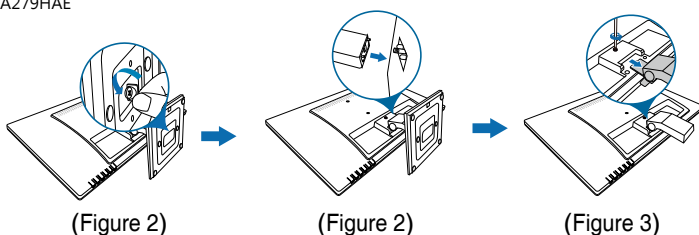
## 2.2 Detaching the arm/base (for VESA wall mount)

The detachable arm/base of this monitor is specially designed for VESA wall mount.

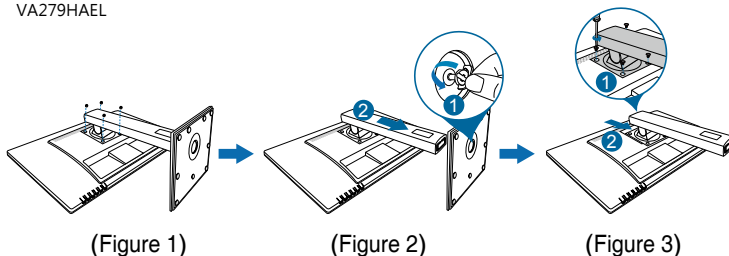
To detach the arm/base:

1. Have the front of the monitor face down on a table.
2. Remove the rubbers in the four screw holes. (Figure 1)
3. Remove the base (Figure 2).
4. Use a screwdriver to remove the screw(s) on the hinge (Figure 3), then remove the hinge.

VA279HAE



VA279HAEL



We recommend that you cover the table surface with soft cloth to prevent damage to the monitor.

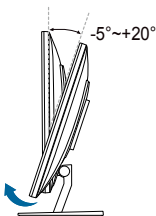


- The VESA wall mount kit (100 x 100 mm) is purchased separately.
- Use only the UL Listed Wall Mount Bracket with minimum weight/load 22.7kg (Screw size: M4 x 10 mm)

## 2.3 Adjusting the monitor

- For optimal viewing, we recommend that you look at the full face of the monitor, then adjust the monitor to the angle that is most comfortable for you.
- Hold the stand to prevent the monitor from falling when you change its angle.
- VA279HAE: The recommended adjusting angle is  $+20^{\circ}$  to  $-5^{\circ}$ .
- VA279HAEL: The recommended adjusting angle is  $+35^{\circ}$  to  $-5^{\circ}$  (for tilt)/ $+90^{\circ}$  to  $-90^{\circ}$  (for swiveling)/  $+130\text{ mm}$  (for height adjustment)/ $90^{\circ}$  (for portrait view).

VA279HAE

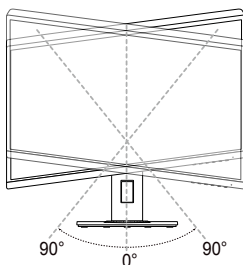
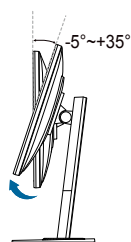


(Tilt)

(Swivel)

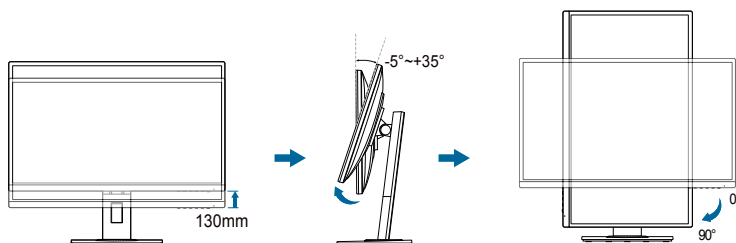
(Height adjustment)

VA279HAEL



### Pivoting the monitor (VA279HAEL)

1. Lift the monitor to the highest position.
2. Tilt the monitor to its maximum angle.
3. Pivot the monitor to the angle you need.

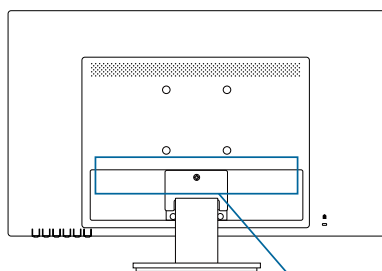


It is normal that the monitor slightly shakes while you adjust the viewing angle.

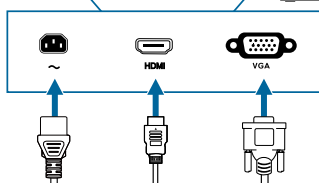
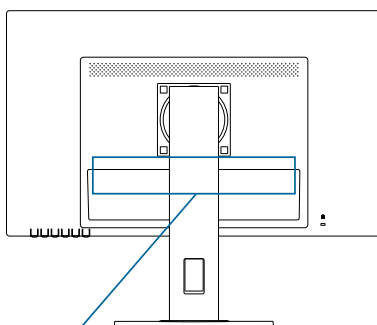
## 2.4 Connecting the cables

Connect the cables as the following instructions:

VA279HAE



VA279HAEL



- **To connect the power cord:** Connect one end of the power cord securely to the monitor's AC input port, the other end to a power outlet.
- **To connect the VGA/HDMI cable:**
  - a. Plug one end of the VGA/HDMI cable to the monitor's VGA/DVI/HDMI jack.
  - b. Connect the other end of the VGA/HDMI cable to your computer's VGA/HDMI jack.



- c. Tighten the two screws to secure the VGA/DVI connector.





---

When these cables are connected, you can choose the desired signal from the Input Select item in the OSD menu.

---

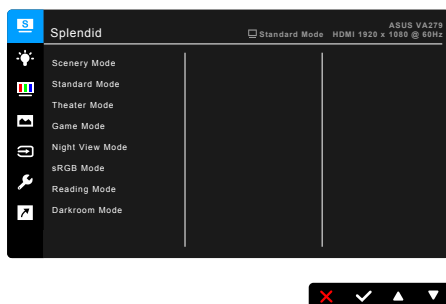
## 2.5 Turning on the monitor

Press the power button . See page 1-2 for the location of the power button. The power indicator  lights up in white to show that the monitor is ON.



## 3.1 OSD (On-Screen Display) menu

### 3.1.1 How to reconfigure

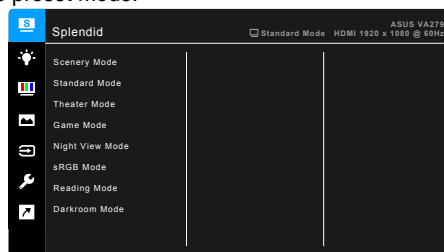


1. Press any button (except the Power button) to display the OSD menu.
2. Press the **Menu** button to activate the OSD menu.
3. Press the buttons as indicated on the screen to navigate through the functions. Highlight the desired function and press **✓** to activate it. If the function selected has a sub-menu, press **▼** and **▲** again to navigate through the sub-menu functions. Highlight the desired sub-menu function and press **✓** to activate it.
4. Press **▼** and **▲** to change the settings of the selected function.
5. To exit and save the OSD menu, press **↶** or **X** repeatedly until the OSD menu disappears. To adjust other functions, repeat steps 1-4.

## 3.1.2 OSD function introduction

### 1. Splendid

This function contains 8 sub-functions you can select for your preference. Each mode has the Reset selection, allowing you to maintain your setting or return to the preset mode.



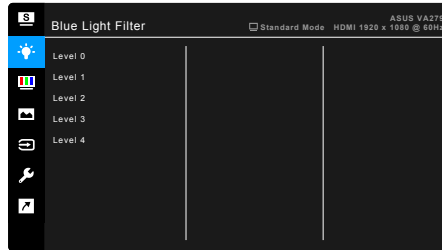
- **Scenery Mode:** Best choice for scenery photo display with SplendidPlus Video Enhancement.
- **Standard Mode:** Best choice for document editing with SplendidPlus Video Enhancement.
- **Theater Mode:** Best choice for movies with SplendidPlus Video Enhancement.
- **Game Mode:** Best choice for game playing with SplendidPlus Video Enhancement.
- **Night View Mode:** Best choice for dark-scene games or movies with SplendidPlus Video Enhancement.
- **sRGB Mode:** best choice for viewing photos and graphics from PCs.
- **Reading Mode:** This is the best choice for book reading.
- **Darkroom Mode:** This is the best choice for a weak ambient light environment.



- 
- In the Standard mode, the following function(s) are not user-configurable: Saturation, Skin Tone, Sharpness, ASCR.
  - In the sRGB mode, the following function(s) are not user-configurable: Brightness, Contrast, Saturation, Color Temp., Skin Tone, Sharpness, ASCR.
  - In the Reading mode, the following function(s) are not user-configurable: Contrast, Saturation, Color Temp., Skin Tone, Sharpness, ASCR.
-

## 2. Blue Light Filter

In this function, you can adjust the blue light filter level.



- **Level 0:** No change.
- **Level 1~4:** The higher the level, the less blue light is scattered. When Blue Light Filter is activated, the default settings of Standard Mode will be automatically imported. Between Level 1 to Level 3, the Brightness function is user-configurable. Level 4 is optimized setting. It is compliance with TUV Low Blue Light Certification. The Brightness function is not user-configurable.

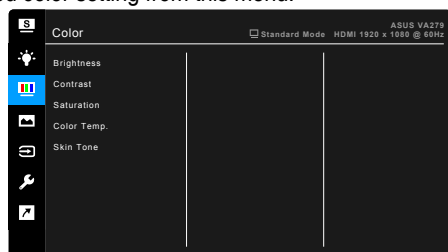


Please refer to the following to alleviate eye strains:

- Users should take some time away from the display if working for long hours. It is advised to take short breaks (at least 5 mins) after around 1 hour of continuous working at the computer. Taking short and frequent breaks is more effective than a single longer break.
- To minimize eye strain and dryness in your eyes, users should rest the eye periodically by focusing on objects that are far away.
- Eye exercises can help to reduce eye strain. Repeat these exercises often. If eye strain continues please consult a physician. Eye exercises: (1) Repeating look up and down (2) Slowly roll your eyes (3) Move your eyes diagonal.
- High energy blue light may lead to eye strain and AMD (Age-Related Macular Degeneration). Blue light Filter to reduce 70% (max.) harmful blue light to avoiding CVS (Computer Vision Syndrome).

### 3. Color

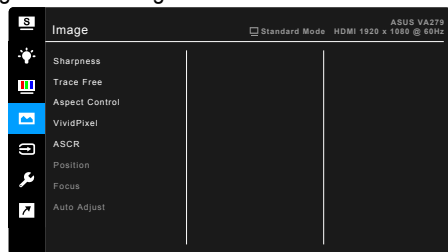
Set a desired color setting from this menu.



- **Brightness:** The adjusting range is from 0 to 100.
- **Contrast:** The adjusting range is from 0 to 100.
- **Saturation:** The adjusting range is from 0 to 100.
- **Color Temp.:** Contains 4 modes including Cool, Normal, Warm and User Mode.
- **Skin Tone:** contains three color modes including Reddish, Natural, and Yellowish.

### 4. Image

Set the image related setting from this menu.



- **Sharpness:** The adjusting range is from 0 to 100.
- **Trace Free:** Adjusts the response time of the monitor.
- **Aspect Control:** Adjusts the aspect ratio to full, 4:3, 1:1 or OverScan.



4:3 is only available when input source is in 4:3 format. OverScan is only available for the HDMI input source.

- **VividPixel:** Enhances the outline of the displayed picture and generates high-quality images on screen.
- **ASCR:** Turns on/off the ASCR (ASUS Smart Contrast Ratio) function.

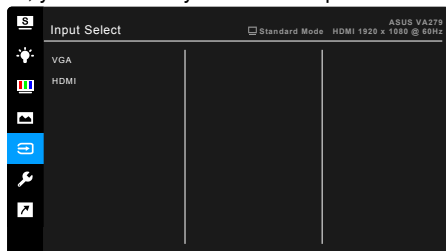
- **Position (Only available for VGA input):** adjusts the horizontal position (H-Position) and the vertical position (V-Position) of the image. The adjusting range is from 0 to 100.
- **Focus (Only available for VGA input):** reduces Horizontal-line noise and Vertical-line noise of the image by adjusting (Phase) and (Clock) separately. The adjusting range is from 0 to 100.



- Phase adjusts the phase of the pixel clock signal. With a wrong phase adjustment, the screen shows horizontal disturbances.
  - Clock (pixel frequency) controls the number of pixels scanned by one horizontal sweep. If the frequency is not correct, the screen shows vertical stripes and the image is not proportional.
- 
- **Auto Adjust.:** Automatically adjusts the image to its optimized position, clock, and phase (for VGA mode only).

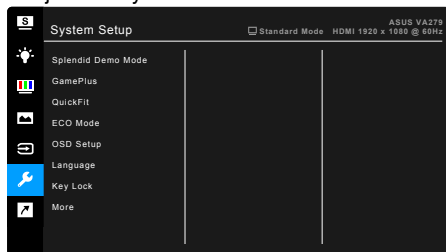
## 5. Input Select

In this function, you can select your desired input source.



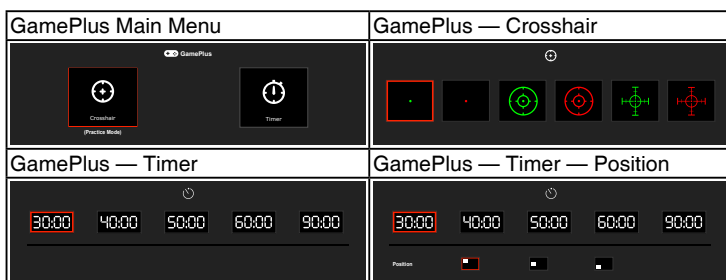
## 6. System Setup

Allows you to adjust the system.

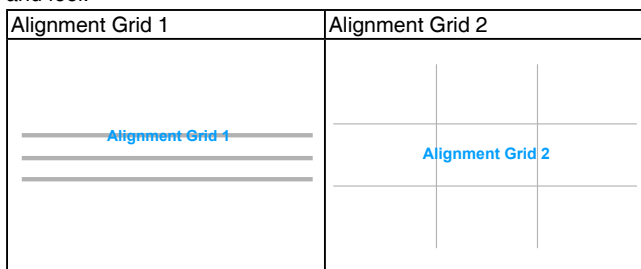


- **Splendid Demo Mode:** Splits the screen into two for Splendid modes comparison. (Scenery mode only)

- GamePlus:** The GamePlus Function provides a toolkit and creates a better gaming environment for users when playing different types of games. In addition, Crosshair function is specially designed for new gamers or beginners interested in First Person Shooter (FPS) games. To active this function:
  - Select ON to enter the GamePlus main menu.
  - Press ◀ and ▶ to select between Crosshair and Timer function.
  - Press ✓ to confirm the function you choose, and ⬅ to go back. Press ✕ to go off, and exit.

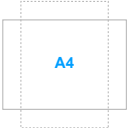

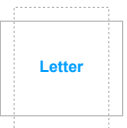


- QuickFit:** You can have a preview of the document or photo layout directly on screen without printing test copies.
  - Alignment:** This facilitates designers and users to organize content and layout on one page and achieve a consistent look and feel.







- \* **Paper size:** You can view the documents in real size on the screen.

| A4                                                                                | B5                                                                                |
|-----------------------------------------------------------------------------------|-----------------------------------------------------------------------------------|
|  |  |
| Letter                                                                            |                                                                                   |
|  |                                                                                   |

- \* **Photo:** The various real photo sizes displayed provides photographers and other users to accurately view and edit their photos in real size on the screen.

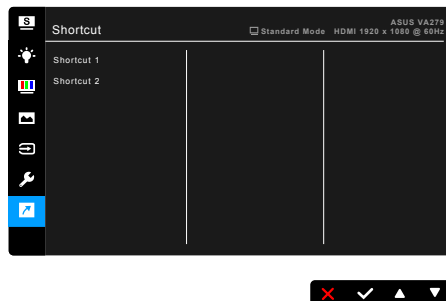
| Photo 4x6, 3x5, 2x2                                                               | Photo 8x10, 5x7                                                                   |
|-----------------------------------------------------------------------------------|-----------------------------------------------------------------------------------|
|  |  |

- **ECO Mode:** reduces power consumption.
- **OSD Setup:**
  - \* Adjusts the OSD timeout from 10 to 120 seconds.
  - \* Enables or disables the DDC/CI function.
  - \* Adjusts the OSD background from opaque to transparent.
- **Language:** There are 21 languages for your selection, including English, French, German, Italian, Spanish, Dutch, Portuguese, Russian, Czech, Croatian, Polish, Romanian, Hungarian, Turkish, Simplified Chinese, Traditional Chinese, Japanese, Korean, Thai, Indonesian, Persian.
- **Key Lock:** To disable all function keys. Press the second button from the right over five seconds to cancel the key lock function.
- **Information:** Shows the monitor information.
- **Power Indicator:** Turns the power LED indicator on/off.
- **Power Key Lock:** Enables or disables the power key.

- **All Reset:** “Yes” allows you to restore the default settings.

## 7. Shortcut

Defines the functions for Shortcut 1 and 2 buttons.



- **Shortcut 1/Shortcut 2:** selects a function for Shortcut 1 and 2 buttons.



When a certain function is selected or activated, your shortcut key may not support. Available function choices for shortcut: Blue Light Filter, Splendid, Brightness, Auto Adjust, Contrast, Color Temp., GamePlus.

## 3.2 Specifications summary

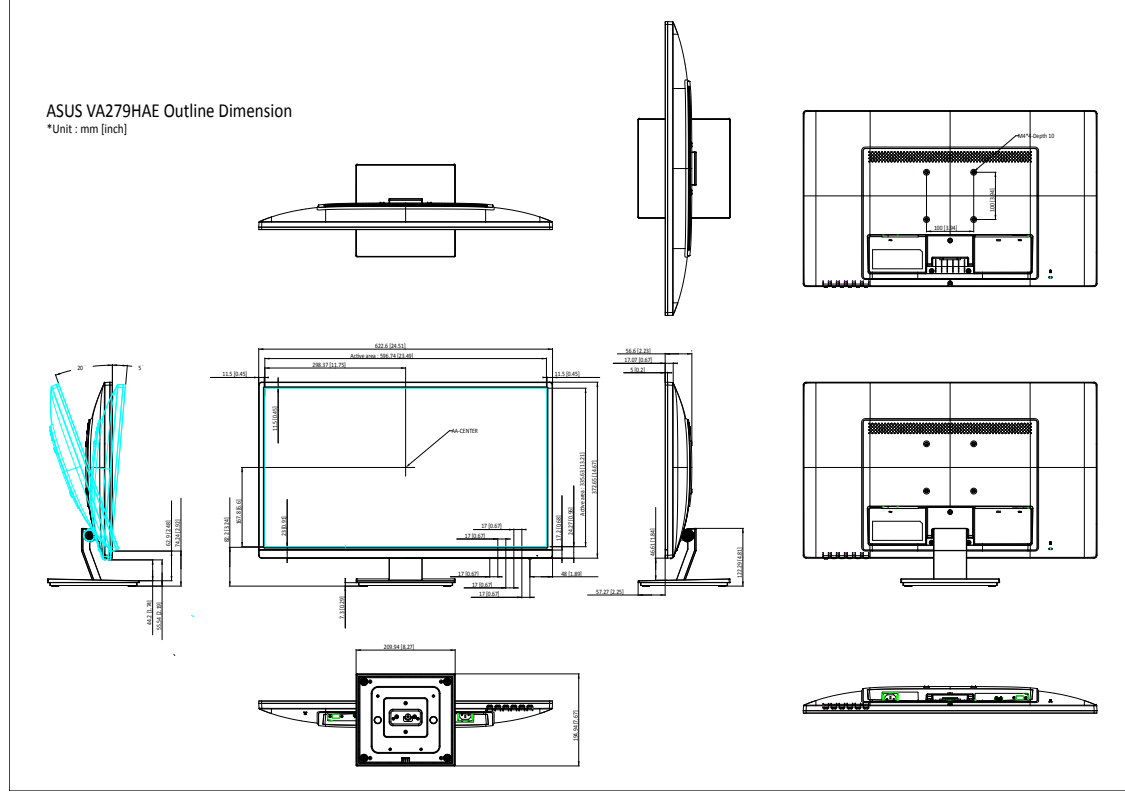
|                                |                                                                         |
|--------------------------------|-------------------------------------------------------------------------|
| Panel Type                     | TFT LCD                                                                 |
| Panel size                     | 27" (16:9, 68.6 cm) wide screen                                         |
| Max. Resolution                | 1920 x 1080                                                             |
| Pixel pitch                    | 0.3112 mm                                                               |
| Brightness (Typ.)              | 300 cd/m <sup>2</sup>                                                   |
| Contrast Ratio (Typ.)          | 3000:1                                                                  |
| Contrast Ratio (Max.)          | 100,000,000:1 (with ASCR on)                                            |
| Viewing angle (H/V) CR>10      | 178°/178°                                                               |
| Display colors                 | 16.7 M                                                                  |
| Response time                  | ≤ 6 ms                                                                  |
| SplendidPlus Video Enhancement | Yes                                                                     |
| SplendidPlus selection         | 8 video preset modes                                                    |
| Auto adjustment                | Yes                                                                     |
| Color temperature selection    | 4 color temperatures                                                    |
| Analog input                   | D-sub                                                                   |
| Digital input                  | HDMI v1.4                                                               |
| Earphone jack                  | No                                                                      |
| Audio input                    | No                                                                      |
| Speaker (Built-in)             | No                                                                      |
| USB 2.0 port                   | No                                                                      |
| Colors                         | Black                                                                   |
| Power LED                      | White (On)/Amber (Standby)                                              |
| Tilt                           | VA279HAE: -5°~+20°<br>VA279HAEL: -5°~+35°                               |
| Pivot                          | VA279HAE: No<br>VA279HAEL: +90°                                         |
| Swivel                         | VA279HAE: No<br>VA279HAEL: +90°~-90°                                    |
| Height Adjustment              | VA279HAE: No<br>VA279HAEL: 0~130 mm                                     |
| Kensington lock                | Yes                                                                     |
| AC input voltage               | AC: 100~240V                                                            |
| Power consumption              | Power On: < 40 W** (Typ.), Standby: < 0.5 W (Typ.),<br>Power Off: 0.5 W |
| Temperature (Operating)        | 0°C~40°C                                                                |
| Temperature (Non-operating)    | -20°C~+60°C                                                             |

|                                 |                                                                                                                                                                                                                                                                                                                                                            |
|---------------------------------|------------------------------------------------------------------------------------------------------------------------------------------------------------------------------------------------------------------------------------------------------------------------------------------------------------------------------------------------------------|
| <b>Dimension (W x H x D)</b>    | <p>VA279HAE:<br/> 622.6 x 430.55 x 194.94 mm (with stand)<br/> 622.6 x 372.65 x 56.6 mm (without stand)<br/> 698 x 138 x 455 mm (package)</p> <p>VA279HAEL:<br/> 622.6 x 525.85 x 224.36 mm (with stand, highest)<br/> 622.6 x 395.85 x 224.36 mm (with stand, lowest)<br/> 622.6 x 372.65 x 56.6 mm (without stand)<br/> 710 x 203 x 458 mm (package)</p> |
| <b>Weight (Esti.)</b>           | <p>VA279HAE: 3.8 kg (net without stand); 4.6 kg (net with stand); 6.1 kg (gross)</p> <p>VA279HAEL: 3.8 kg (net without stand); 6.5 kg (net with stand); 8.3 kg (gross)</p>                                                                                                                                                                                 |
| <b>Multi-languages</b>          | 21 languages (English, French, German, Italian, Spanish, Dutch, Portuguese, Russian, Czech, Croatian, Polish, Romanian, Hungarian, Turkish, Simplified Chinese, Traditional Chinese, Japanese, Korean, Thai, Indonesian, Persian)                                                                                                                          |
| <b>Accessories</b>              | Power cord, HDMI cable (optional), VGA cable (optional), Quick start guide, Warranty card                                                                                                                                                                                                                                                                  |
| <b>Compliance and Standards</b> | UL/cUL, CB, CE, ErP, FCC, RCM, BSMI, VCCI, RoHS, J-MOSS, MEPS, WEEE, PSE, Windows 7 & 8.1&10 WHQL, TUV-Flicker free, TUV-Low Blue Light, ISO9241-307, PC-Recycle, UkrSEPRO, ICES-3, EU Energy Label, VCCI                                                                                                                                                  |

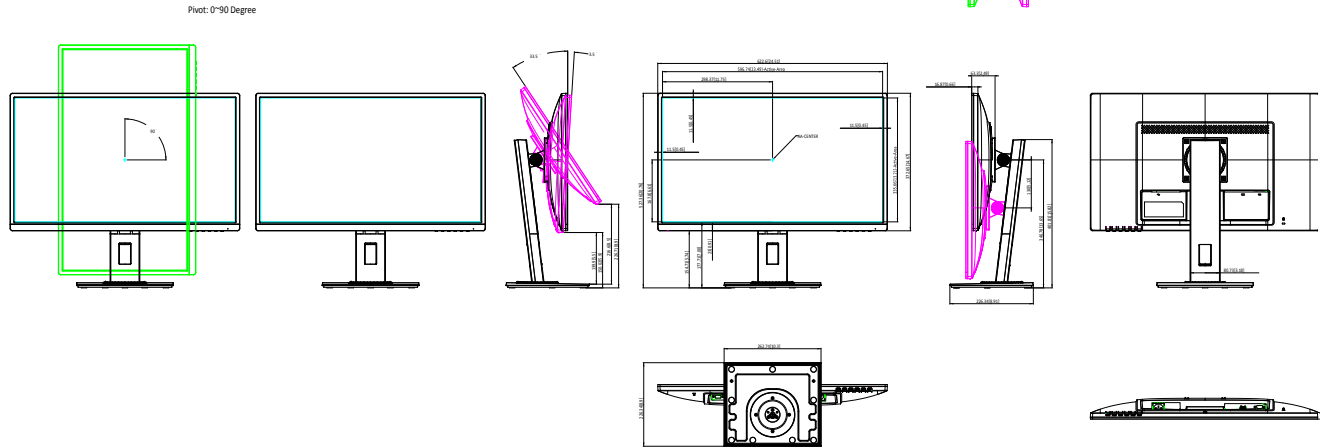
\*Specifications are subject to change without notice.

\*\*Measuring a screen brightness of 200 nits without audio/USB/Card reader connection.


### 3.3 Outline dimensions



\*Unit: mm (inch)



## 3.4 Troubleshooting (FAQ)

| Problem                                                        | Possible Solution                                                                                                                                                                                                                                                                                                                                                                            |
|----------------------------------------------------------------|----------------------------------------------------------------------------------------------------------------------------------------------------------------------------------------------------------------------------------------------------------------------------------------------------------------------------------------------------------------------------------------------|
| Power LED is not ON                                            | <ul style="list-style-type: none"><li>• Press the  button to check if the monitor is in the ON mode.</li><li>• Check if the power cord is properly connected to the monitor and the power outlet.</li><li>• Check if the power switch is ON.</li></ul>                                                      |
| The power LED lights amber and there is no screen image        | <ul style="list-style-type: none"><li>• Check if the monitor and the computer are in the ON mode.</li><li>• Make sure the signal cable is properly connected the monitor and the computer.</li><li>• Inspect the signal cable and make sure none of the pins are bent.</li><li>• Connect the computer with another available monitor to check if the computer is properly working.</li></ul> |
| Screen image is too light or dark                              | <ul style="list-style-type: none"><li>• Adjust the Contrast and Brightness settings via OSD.</li></ul>                                                                                                                                                                                                                                                                                       |
| Screen image is not centered or sized properly                 | <ul style="list-style-type: none"><li>• Adjust the H-Position or V-Position settings via OSD.</li></ul>                                                                                                                                                                                                                                                                                      |
| Screen image bounces or a wave pattern is present in the image | <ul style="list-style-type: none"><li>• Make sure the signal cable is properly connected to the monitor and the computer.</li><li>• Move electrical devices that may cause electrical interference.</li></ul>                                                                                                                                                                                |
| Screen image has color defects (white does not look white)     | <ul style="list-style-type: none"><li>• Inspect the signal cable and make sure that none of the pins are bent.</li><li>• Perform All Reset via OSD.</li><li>• Adjust the R/G/B color settings or select the Color Temperature via OSD.</li></ul>                                                                                                                                             |
| Screen image is blurry or fuzzy                                | <ul style="list-style-type: none"><li>• Adjust the Phase and Clock settings via OSD.</li></ul>                                                                                                                                                                                                                                                                                               |

## 3.5 Supported operating modes

| Resolution | Vertical Frequency (Hz) | Horizontal Frequency (KHz) |
|------------|-------------------------|----------------------------|
| 640x350    | 70(N)                   | 31.47(P)                   |
| 640x480    | 59.94(N)                | 31.47(N)                   |
| 640x480    | 66.66(N)                | 35.00(N)                   |
| 640x480    | 72.82(N)                | 37.87(N)                   |
| 640x480    | 75.00(N)                | 37.5(N)                    |
| 720x400    | 70.08(P)                | 31.47(N)                   |
| 800x600    | 56.25(P)                | 35.16(P)                   |
| 800x600    | 60.32(P)                | 37.88(P)                   |
| 800x600    | 72.12(P)                | 48.08(P)                   |
| 800x600    | 75.00(P)                | 46.86(P)                   |
| 832x624    | 74.55(P/N)              | 49.72(P/N)                 |
| 1024x768   | 60.00(N)                | 48.36(N)                   |
| 1024x768   | 70.069(N)               | 56.476(N)                  |
| 1024x768   | 75.00(N)                | 60.02(N)                   |
| 1152x864   | 75.00(P/N)              | 67.5(P/N)                  |
| 1280x720   | 60                      | 44.77(N)                   |
| 1280x800   | 60(P)                   | 49.7(N)                    |
| 1280x960   | 60.00(N)                | 60.00(P)                   |
| 1280x1024  | 60.02(P)                | 63.98(P)                   |
| 1280x1024  | 75.02(P)                | 79.98(P)                   |
| 1360x768   | 59.79(P)                | 47.712(P)                  |
| 1400x900   | 59.89(P)                | 55.94(N)                   |
| 1440x900   | 74.984(P)               | 70.635                     |
| 1680x1050  | 60.00(P)                | 65.29(N)                   |
| 1920x1080  | 60.00(P)                | 67.5(P)                    |
| 1929x1080* | 83.9(P)                 | 75.00(N)                   |

\*Supported only when the HDMI port is in use.



When the monitor is operating in the video mode (i.e., not displaying data), the following high definition modes shall be supported in addition to standard definition video.

| Preset | Timing Name | Pixel Format | Horizontal Frequency (kHz) | Vertical Frequency (Hz) | Pixel Rate (MHz) | OSD Display |
|--------|-------------|--------------|----------------------------|-------------------------|------------------|-------------|
| 1      | 480p        | 720 x 480    | 31.469                     | 60                      | 27               | 480p-60Hz   |
| 2      | 720p60      | 1280 x 720   | 45                         | 60                      | 74.25            | 720p-60Hz   |
| 3      | 576p        | 720 x 576    | 31.25                      | 50                      | 27               | 576p-50Hz   |
| 4      | 720p50      | 1280 x 720   | 37.5                       | 50                      | 74.25            | 720p-50Hz   |
| 5      | 1080p60     | 1920 x 1080  | 67.5                       | 60                      | 148.5            | 1080p-60Hz  |
| 6      | 1080p50     | 1920 x 1080  | 56.25                      | 50                      | 148.5            | 1080p-50Hz  |