

## TX-32P



LED 

A 32" display with precise 10-point projected capacitive touch technology, and a sturdy exterior with reinforced glass ideal for high-traffic settings.

With a focus on providing a seamless touch experience, the TX-32P incorporates projected capacitive touch technology which allows accurate 10-point touch capabilities, including responsiveness to gloves, in landscape or portrait orientations. Complemented by a durable metal exterior with strengthened anti-fingerprint glass it's an optimal display for enhancing interactivity in high-traffic areas.

- > Incorporate Projected Capacitive Touch Technology
- > 10-point touch capability for systems with Microsoft® Windows® 7~ 10, Linux, Ubuntu, and Android support plug and play
- > 5-point touch capability (gesture mode) for systems with MAC OS (10.6 upward) by driver
- > LED-backlit technology with 1920 x 1080 Full HD resolution
- > Anti-Burn-in™ technology
- > Versatile connectivity (VGA, DVI, HDMI, Audio in/out)
- > Portrait/ landscape display orientation for flexible placement
- > RS-232 for display control from a remote location
- > Durable metal housing
- > Rigorous screening of the components for mission-critical 24/7 applications

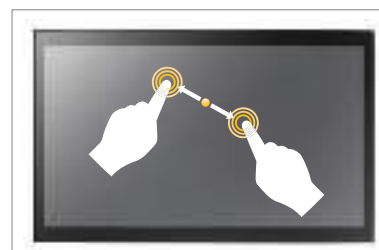


# TX-32P

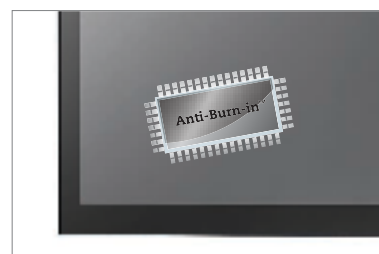
## Specifications

## TX-32P

<b>Panel</b>	Panel Type	LED-Backlit TFT LCD (MVA Panel)
	Panel Size	31.5"
	Max. Resolution	FHD 1920 x 1080
	Refresh rate	60 Hz
	Pixel Pitch	0.3637 mm
	Brightness	380 cd/m <sup>2</sup>
	Contrast Ratio	3000 : 1
	Viewing Angle (H/V)	178°/178°
	Display Colour	16.7 M
	Response Time	8 ms (GTG)
<b>Frequency (H/V)</b>	H Freq.	30 kHz - 75 kHz
	V Freq.	50 Hz - 75Hz
<b>Input</b>	VGA	15-Pin D-Sub
	DVI	24-Pin DVI-D
	HDMI	HDMI
<b>External Control</b>	RS-232 in	9-Pin D-Sub
<b>Audio</b>	Audio In	1 x stereo audio in for PC (audio jack, 3.5 Ø)
	Audio Out	1 x stereo audio in for PC (audio jack, 3.5 Ø)
	Internal Speaker	10 W x 2
<b>Touch Screen</b>	Technology	Projected Capacitive
	Positional Accuracy	± 2.0 mm 100% of touchable active area
	Active Force	Non-required
	Panel Interface	USB (Type-A)
<b>Power</b>	Power Supply	Internal
	Power Requirements	100 - 240 V, 50-60 Hz
	Consumption	< 52 W (Max)
		< 0.9 W (Stand-by) < 0.5 W (Off)
<b>Operating Conditions</b>	Temperature	0°C ~ 40°C (32°F~104°F)
	Humidity	20% ~ 80% (No condensation)
<b>Mounting</b>	VESA FPMPI	Yes (400 x 200 mm)
<b>Dimensions</b>	w/o Base (W x H x D)	750.0 x 467.0 x 70.0 mm (29.5" x 18.4" x 2.8")
	w/o Base Packaging (W x H x D)	880.0 x 590.0 x 220.0 mm (34.6" x 23.2" x 8.7")
<b>Weight</b>	Product Weight	12.5 kg (27.6 lb)
	Packaging Weight	14.5 kg (32 lb)
<b>Regulation Approval</b>	Certifications & Compliance	CE, RoHS, GOST-R, WEEE, REACH
<b>Accessories</b>	Supplied	USB cable, power cord, remote control, batteries
	Optional	Stand base (STD-03)



Advanced Projected Capacitive Touch Technology for seamless and precise multi-touch response



Anti-Burn-in™ technology prevents image sticking



Flexible display orientations suit preferred content layouts